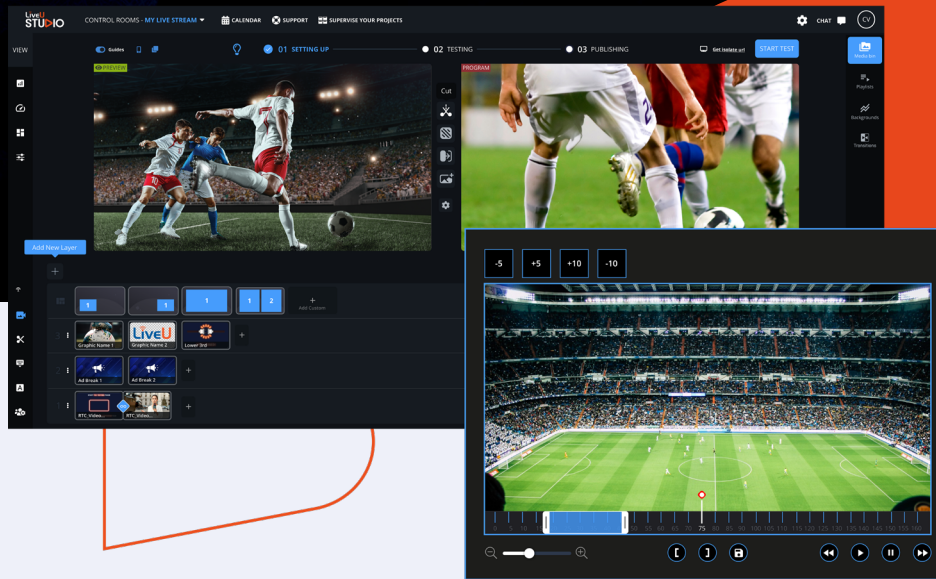


LiveU STUDIO

PRODUCE BROADCAST-GRADE, CREATIVE
SHOWS FROM YOUR BROWSER

Next-Generation Cloud Video Production solution



LiveU Studio is the world's first cloud-native live video production solution with native LRT™ (LiveU Reliable Transport) input and output. LiveU Studio allows storytellers to seamlessly **produce high-quality, multi-cam events** with advanced features like video switching, remote callers, audio mixing, graphics, instant replay, and social media monetization before distributing them **to up to 30 digital and linear destinations** directly from their web browser.

ALL-IN-ONE STUDIO WORKFLOW



CAPTURE

Input multiple sources coming from the LiveU EcoSystem and external solutions, including graphics.



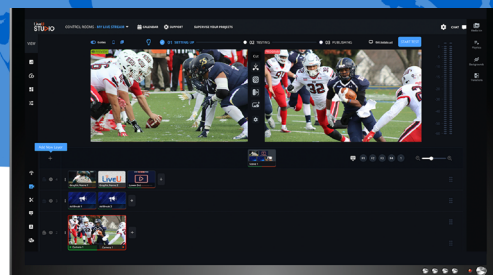
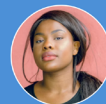
CREATE

Switch up to 12 inputs with intuitive vision mixing, remote guest contribution, graphics, audio mixing, and produce your event – all from your browser



DISTRIBUTE

Broadcast your live content everywhere and reach your audience on up to 30 digital and linear channels at once.



MAKING LIVE PRODUCTION EASY & SCALABLE

LiveU Studio features an **intuitive, user-friendly interface**, that allows a single operator to run the entire production in broadcast-quality. This makes the learning curve a breeze, so you're ready to go in no time.

The scalability of LiveU Studio's control rooms enables producers to easily tailor their set-up to the unique demands of each project. This makes it highly cost-effective, as you only pay for the resources you need, ensuring top-tier production without breaking the bank!

ADVANCED FEATURE SET



VIDEO SWITCHING

- Live switching of up to 12 sources
- Configurable hotkeys
- Multiple key layer support
- Media bin
- Configurable fallback sources



MULTI-DESTINATION

- Up to 30 destinations publisher
- HLS streaming to third-party CDNs
- LRT™ output to LiveU channels, including LiveU Matrix



GRAPHICS & AUDIO

- Graphics builder
- Automatic lower thirds
- Third-party live graphics support
- Audio mixer



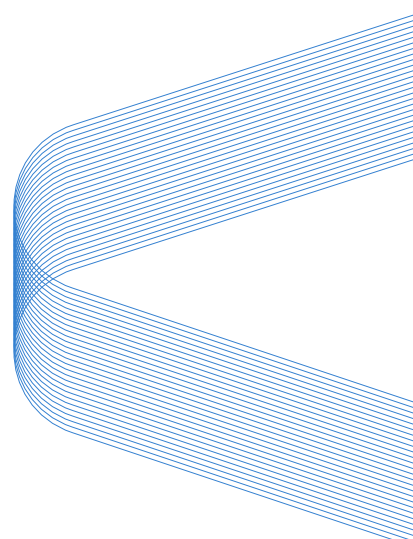
REMOTE GUESTS

- Ultra-low latency guest contribution using WebRTC
- Seamless 'click a link to join' experience
- Screen share functionality
- 'On-air' status notification



PROFESSIONAL WORKFLOWS

- Frame accurate video switching
- Instant replay
- ISO recording
- Ad insertion
- Multiviewer
- Real-time performance monitoring



WHAT CAN I DO USING LIVEU STUDIO?



SPORTS

GAMES
REMOTE COMMENTARY
TALK SHOWS



NEWS

PRESS CONFERENCES
BREAKING NEWS COVERAGE
SPECIAL EVENT COVERAGE



ENTERPRISE

HYBRID EVENTS
VIP CUSTOMER EVENTS
SOCIAL MEDIA PLATFORM
ENGAGEMENT

TECHNICAL SPECIFICATIONS

INGESTING LIVE STREAMS

Number of live inputs (VOD included)	Up to 12
Supported live video protocols	LRT™, SRT, WebRTC, RTMP, RTP, RTMPS, HLS, RTSP, MPEG-TS, DASH
Supported resolution	Up to 1920x1080
Supported video bitrate	Up to 40Mbps
Supported frame rate	Up to 60fps
Scan type	Interlaced or progressive
Supported video codecs	H.264, H.265
Supported audio channels	Mono or Stereo
Supported audio bitrate	384 kbps @48000 kHz
Supported audio codecs	AAC
Multi audio modes	Stereo, RStereo (switch left and right), left (left to Stereo), right (right to Stereo)
Supported live audio types	HTTP/HLS
Supported audio file formats	MP3, AIFF, WAV, MP4, FLAC
Multi audio, video or subtitle tracks	Supported

DISTRIBUTING LIVE VIDEO

Simultaneous live streams	Up to 30 destinations
Supported live video protocols	RTMP, RTMPS, SRT, WebRTC, HLS, ZIXI, MPEG-TS, LRT™
Supported live video resolution	Up to 1920x1080
Supported live video bitrate	Up to 40Mbps
Supported framerate	Up to 60fps
Scan type	Interlaced, progressive
Supported video codecs	H.264
Supported audio codecs	AAC
Supported audio bitrate	Up to 384kbps
Video preset	Slow to Ultrafast
Video profile	Main or Baseline
Supported audio channels	Stereo
Supported aspect ratios	Horizontal (16:9), Square 1:1, Vertical 4:5, Portrait 2:3, Stories 9:16
SCTE-35 ad marker insertion	Available for HLS

VIDEO-ON-DEMAND (VOD) FILE FORMAT SUPPORT

Supported video formats	MPEG-4 (.mp4), MKV or WebM
Supported video bitrate	Up to 40Mbps
Supported video codecs	H.264, H.265
Supported audio codecs	MP3, AAC
Supported file size	5GB per local file or unlimited via URL
Supported resolution	Up to 1920x1080
Multi audio, video or subtitle tracks	Supported

CLIPS EXPORT FORMAT SUPPORT

Supported resolution	Up to 1080p
Supported aspect ratios	Horizontal (16:9)
Supported video codecs	H.264
Supported video formats	MP4

GRAPHIC OVERLAYS AND IMAGERY

Graphic type	File	Live graphics: Dizplai, Singular, Flowics, StreamElements, Streamlabs
Supported resolution	Up to 1920x1080	Up to 1920x1080
Supported file formats	PNG, JPG, GIF, AVIF, WEBP, APNG	HTML5
Supported audio codecs	AAC	AAC